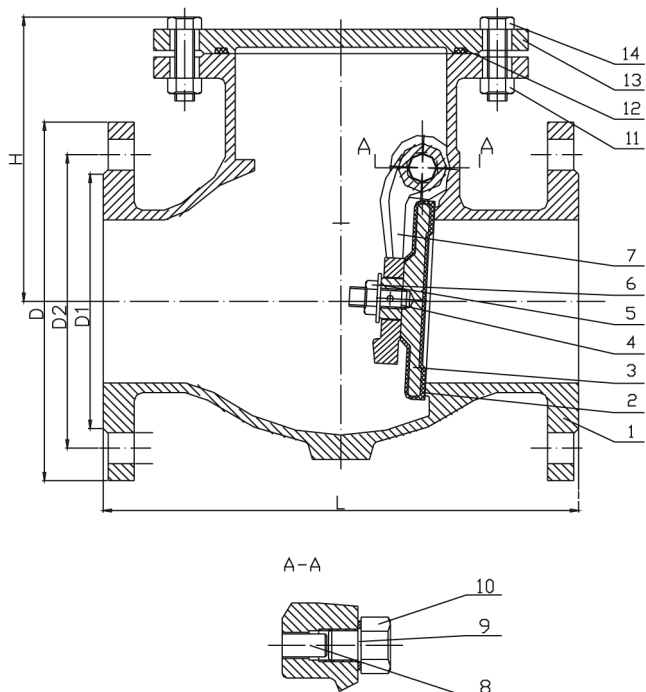


Ductile Iron Swing Check Valve Resilient Seated Flanged Ends. PN16



- Working pressure: 16bar.125PSI
- Shell test pressure: 24bar/250PSI
- Seat test pressure: 17.6bar/125PSI
- Media Water
- Coating
- Blue Fusion Bonded Epoxy
- Valve is designed and manufactured according to BS153/BS4090

Material for main parts:

No	Part	Material
1	Body	Ductile Iron
2	Disc Coating	Rubber (EPDM)
3	Disc	Ductile Cast Iron
4	Stud	Zinc Plated Steel
5	Washer	Zinc Plated Steel
6	Lock Nut	Zinc Plated Steel
7	Hinge	Ductile Cast Iron
8	Hinge Pin	Stainless Steel
9	Gasket	NBR
10	Stud	Zinc Plated Steel
11	Nut	Zinc Plated Steel
12	Gasket	NBR
13	Cover	Ductile Cast Iron
14	Bolt	Zinc Plated Steel

Dimensions(mm) and weight:

Nominal Size		L	H
DN(mm)	Inch		
50	2"	203	135
80	3"	241	160
100	4"	292	185
150	6"	356	240
200	8"	495	265
250	10"	622	290
300	12"	698	330
350	14"	787	375

For special requirements of material please consult

Windmill View,
Blackchurch,
Rathcoole,
Co. Dublin.
Ph. +353 (0)1 257 0388
Fax: +353 (0)1 257 0389
Email. sales@proflo.ie

